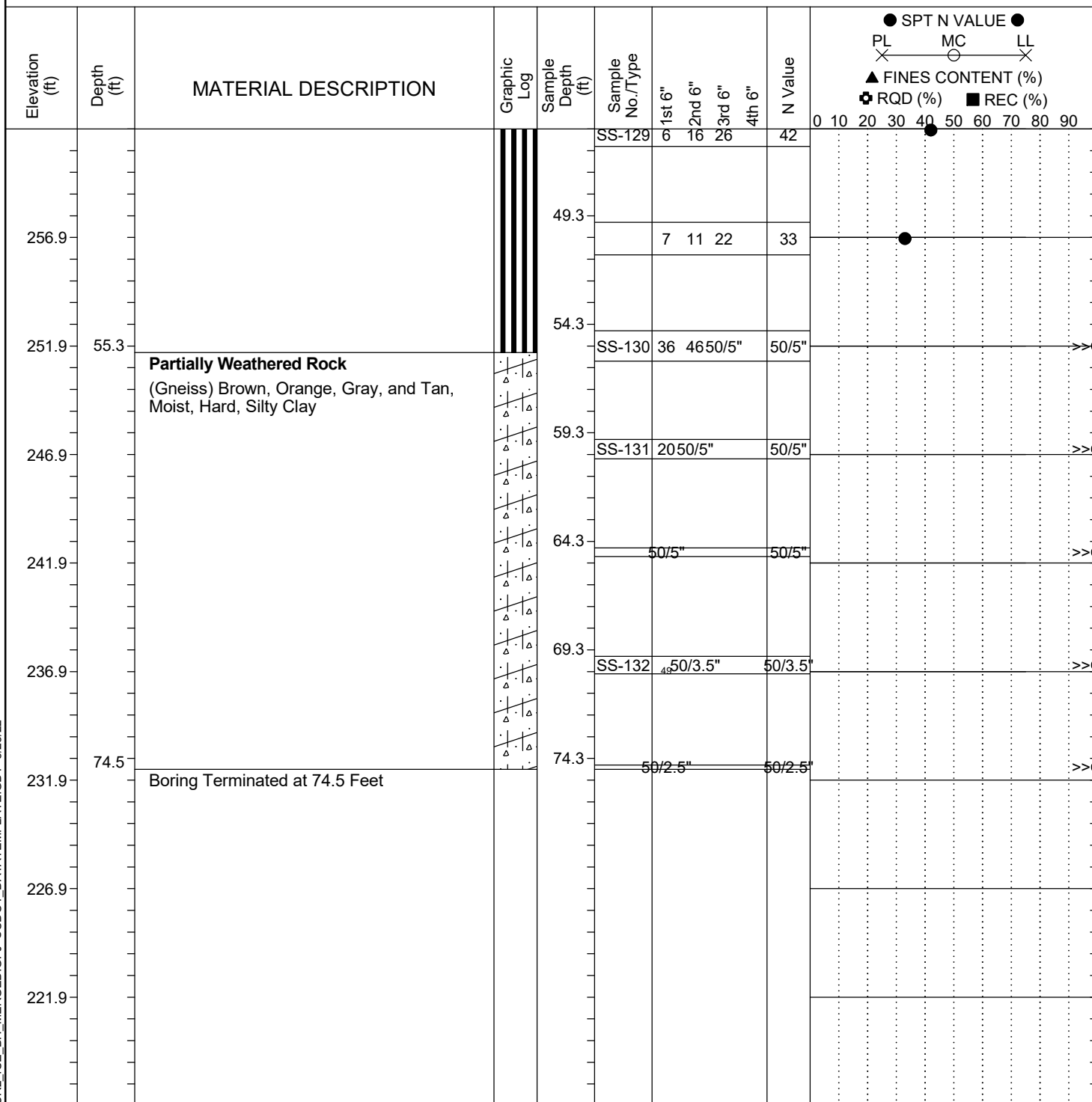


Project ID: P039719				County: Richland		Boring No.: G-123		
Site Description:		Carolina Crossroads Phase 2					Route:	Broad River Rd.
Eng./Geo.: C. McIlroy		Boring Location: 614+27		Offset: 58 RT		Alignment: US176WB		
Elev.: 306.9 ft	Latitude: 34.03936124	Longitude: -81.09383128		Date Started:		3/14/2022		
Total Depth: 74.5 ft	Soil Depth: 74.5 ft	Core Depth: N/A ft		Date Completed:		3/15/2022		
Bore Hole Diameter (in): 2.25		Sampler Configuration		Liner Required: Y (N)		Liner Used: Y (N)		
Drill Machine: D-50 #435	Drill Method: RW		Hammer Type: Automatic		Energy Ratio: 84.4%			
Core Size: N/A	Driller: P. Mattis		Groundwater: TOB N/A		24HR	FIAD		



LEGEND

SAMPLER TYPE		DRILLING METHOD	
SS - Split Spoon	NQ - Rock Core, 1-7/8"	HSA - Hollow Stem Auger	RW - Rotary Wash
UD - Undisturbed Sample	CU - Cuttings	CFA - Continuous Flight Augers	RC - Rock Core
AWG - Rock Core, 1-1/8"	CT - Continuous Tube	DC - Driving Casing	